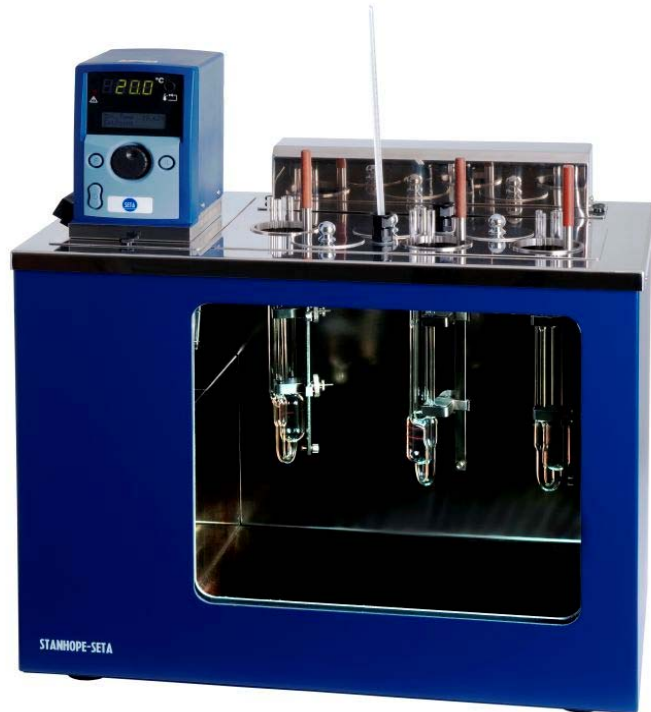


SETA KV-6 VISCOMETER BATH

A compact, high quality bath manufactured in accordance with ASTM D445-IP 71 requirements



- ASTM D445 compliant
- 6 place stirred oil or water bath
- Temperature range ambient to 150 °C
- Temperature stability +/-0.01 up to 100°C and +/- 0.02 between 100 and 150°C
- Digital display with 0.01°C resolution
- Integral back lighting
- Adjustable heating rates via control panel
- Safety over-temperature cut out and low level detection
- Provision for reference thermometer
- Drain trap provided

SPECIFICATIONS

Seta Product Ref:	84200-0
Temperature Range:	Ambient to 150°C
Temperature Stability:	±0.01° at 40 and 100°C +/- 0.02 between 100 and 150°C
Tube Capacity:	up to 6
Bath Fluid:	Oil or Water
Bath Capacity:	50 litres
Voltage:	220/240V, 50/60Hz
Power:	2.2 kW
Size (HxWxD):	Bath outside dimensions 560 x 345 x 435mm Tank inside dimension 526 x 273 x 400mm